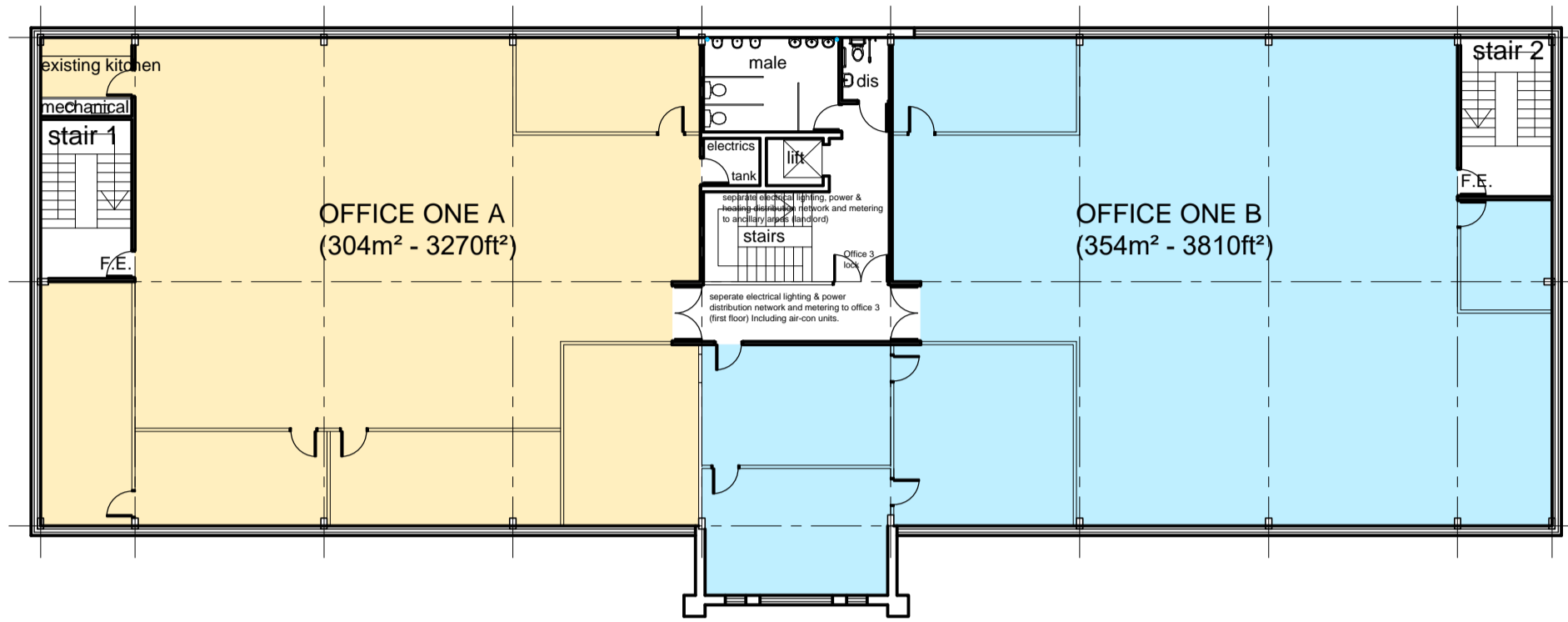


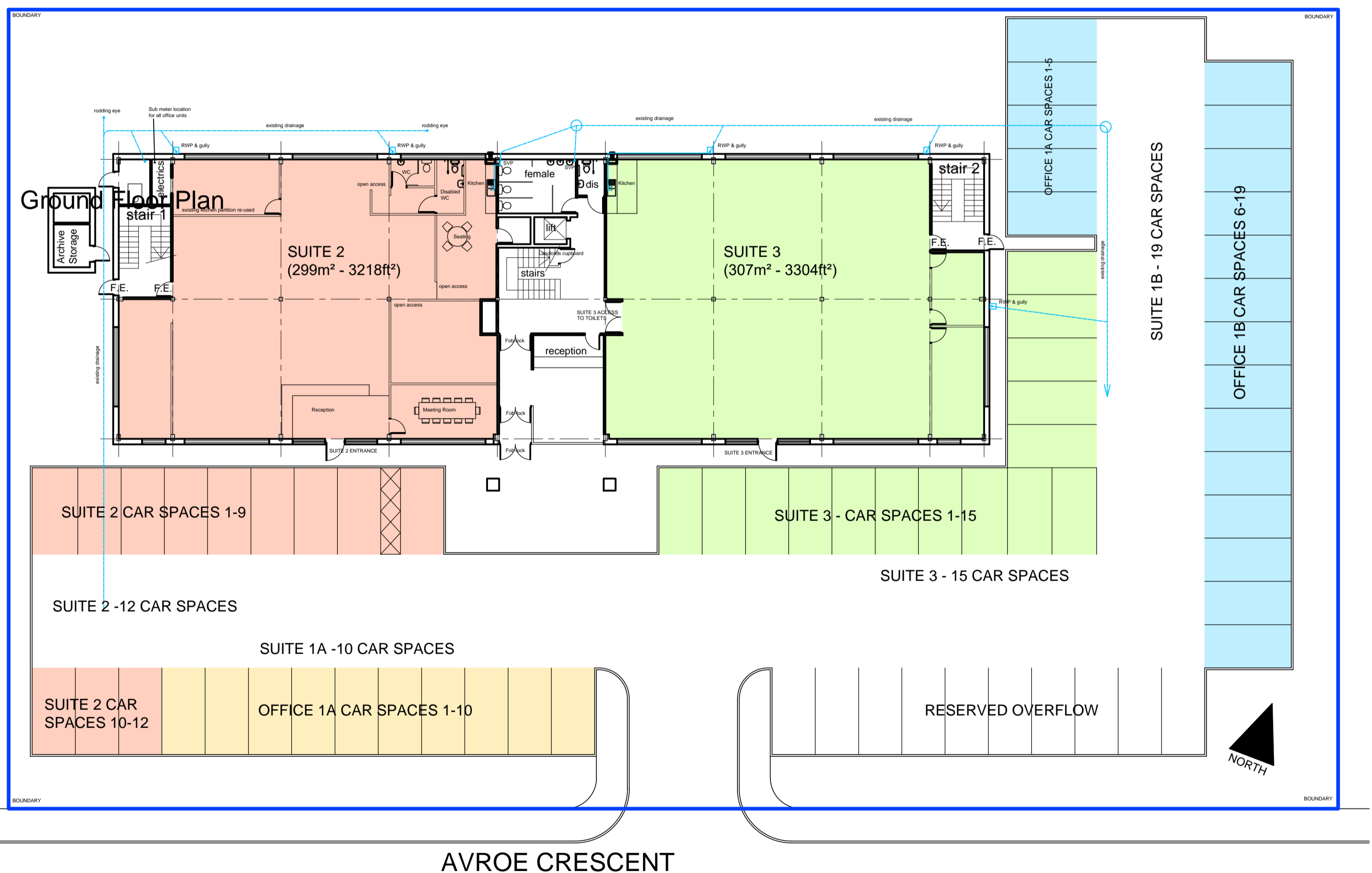
**NOTES**

- This drawing is copyright. No unauthorised copying of drawing without the express permission of the architect.
- Do not scale from prints. Use figure dimensions only.
- Contractors to check all dimensions on site prior to commencement of works.
- All works to be carried out in accordance with current statutory Health and Safety Regulations.
- This drawing is to be read in conjunction with all relevant consultants' and / or specialists' drawings / documents and any discrepancies or variations are to be notified to the architect before affected work commences.

REV.	AMENDMENTS	DATE
Rev A	Suite 2 partition amendments	16-03-01
Rev B	Car Parking Allocation	16-03-01
Rev C	Suite 3 new entrance & parking reallocation	16-05-13
Rev D	Suite 1A & 1B parking arrangements altered	18-03-12
Rev E	Suite 1A & 1B Office & parking arrangements altered	18-03-14
Rev F	Parking distribution altered	20-12-14



## FIRST FLOOR PLAN



## GROUND FLOOR PLAN & CAR PARKING

Project	ALTERATIONS TO: AVROE HOUSE AVROE CRESENT, BLACKPOOL
Drawing	GROUND & FIRST FLOOR PLANS AND CAR PARKING
Client	HENCO INTERNATIONAL LTD
Dwn. By	NP
Scale	1:200
Drg. No.	15-09-10-F
Drg. Size	A2
Date	MARCH 2018